

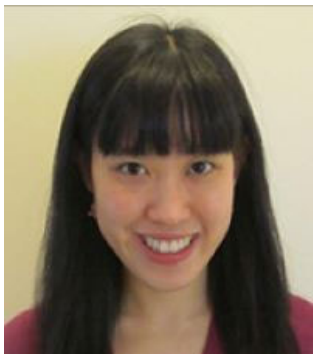
**Western University**  
**Friday, May 6, 2022**

***The Dr. Cecil & Linda Rorabeck Keynote Lecture***

***“Can We Stack the Deck: Using Imaging Data to Guide Clinical Decision Making”***

**Pencilla Lang MD PhD**

Assistant Professor, Oncology, Western University  
Radiation Oncologist, London Health Sciences Centre



Dr. Pencilla Lang is a radiation oncologist (treats cancers with radiation) at the London Health Sciences Centre and Assistant Professor at Western University in the department of Oncology. She treats head and neck, lung and soft tissue (bones, cartilage and muscle) cancers. Her PhD focused on image-guidance of medical devices. Her research interests include prediction models in oncology, and translation of research tools into the clinical environment.

**Sarah Mattonen, PhD**

Assistant Professor, Medical Biophysics, Oncology, & Biomedical Engineering, Western University  
Baines Research Chair in Translational Cancer Imaging, London Regional Cancer Program  
Scientist, Lawson Health Research Institute



Dr. Mattonen is an Assistant Professor at Western University in the Department of Medical Biophysics with a cross-appointment in the Department of Oncology. She received her PhD in Medical Biophysics from Western University in 2016 and completed her postdoctoral training at Stanford University in the Department of Radiology in 2019. Her research interests include developing, evaluating, and translating quantitative image analysis tools to support diagnosis, treatment, and response assessment in oncology. These computational imaging models will assist clinicians in decision-making and allow for personalized medicine, with the goal of improving outcomes for cancer patients.